



ruralhealthinfo.org

Your *First STOP* for
Rural Health
INFORMATION



Linking Research to Rural Communities with the NIH National Center for Advancing Translational Sciences

Housekeeping

- Q & A to follow – Submit questions using Q&A area
- Slides are available at www.ruralhealthinfo.org/webinars/nih-ncats
- Technical difficulties please visit the Zoom Help Center at support.zoom.us

Featured Speakers



Kay Miller Temple, MD, Web Writer, the Rural Health Information Hub



Michael Kurilla, MD, Ph.D., Director, Division of Clinical Innovation, National Center for Advancing Translational Sciences, National Institutes of Health



Laura James, MD, Professor of Pediatrics; Associate Vice Chancellor for Clinical and Translational Research; Director, Translational Research Institute

National Center for Advancing Translational Sciences: Addressing Rural Health Disparities

NIH National Center for Advancing Translational Sciences:
Involving Rural America in Research



A new diagnosis of cancer? Of a rare disease? Or a chronic medical problem with seemingly no new treatment? The National Center for Advancing Translational Sciences is supporting investigators and ensuring that their cutting-edge science gets to the people who need it. Translational science teams in Arkansas, Florida and Washington are making that happen in the rural areas of their states.

October 23, 2019

www.ruralhealthinfo.org/rural-monitor/ncats-rural-research/

Translational Science: Research with Results that Touch
Rural Populations



Translational science is a specialized research field bringing cutting-edge science to patients that need it. Making sure rural communities are also recipients of new research, the National Center for Advancing Translational Science is a federal agency that facilitates the steps and supports the investigators who want their findings to translate into better health.

October 23, 2019

www.ruralhealthinfo.org/rural-monitor/translational-science/

NCATS Strategic Plan	<ul style="list-style-type: none"> • Translational science • Collaboration and Partnerships • Education and Training • Stewardship
NCATS Goals	<ul style="list-style-type: none"> • Conduct/support research with results that catalyze development and dissemination of medical interventions. • Advance translational team science by strategically engaging diverse stakeholders/partners. • Develop creative and diverse translational science workforce • Practice good stewardship of public funds

Key: Black = Science; Brown = Collaboration and partnerships; Green = Workforce education; Blue = Stewardship

Monitor

Center for Advancing Translational Sciences:
America in Research

MD

ce: Research with Results that Touch Rural Populations

s of an
lition. Hearing
of a cancer
for the first time
atment for a
no longer keep
s. Though these



***“We advance
science from
one stage
to another.”***

Translational Sciences' Spectrum

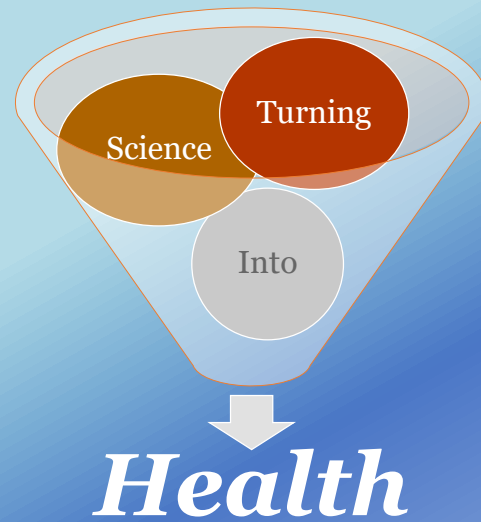
Steps in using research results
Basic research: NCATS doesn't do basic science...but it depends on it. Researchers first discover results that might impact diagnosis or treatment of human disease
Pre-Clinical Research: Basic science research results ... <i>recognized as results that might actually help deal</i> with a human disease and are used to do further research
Clinical Research: Use results from pre-clinical research with potential for diagnosing or treating human disease and do follow-up research to test effectiveness and safety
Clinical Implementation Use the interventions/results found effective and safe in the <i>clinical research</i> stage for routine clinical care and often use further research to monitor
Public Health Integration In this stage of translation, researchers study health outcomes at the population level to determine the effects of diseases and efforts to prevent, diagnose and treat them. Findings help guide scientists working to assess the effects of current interventions and to develop new ones.

<https://ncats.nih.gov/translation/spectrum>

Examples of NCATS-supported Rural Research

Health Research Participation, Opportunity, and Willingness Among Minority and Rural Communities of Arkansas. https://www.ncbi.nlm.nih.gov/pubmed/29772113	Translational Research Institute, University of Arkansas for Medical Sciences
Developing and Launching a Research Participant Registry. https://www.ncbi.nlm.nih.gov/pubmed/29714606	Translational Research Institute, University of Arkansas for Medical Sciences
Breakfast Is Brain Food? The Effect on Grade Point Average of a Rural Group Randomized Program to Promote School Breakfast* https://www.ncbi.nlm.nih.gov/pubmed/31257605	University of Minnesota Clinical and Translational Science Institute
Suboptimal geographic accessibility to comprehensive HIV care in the US: regional and urban-rural differences https://www.ncbi.nlm.nih.gov/pubmed/3111684	Virginia Commonwealth University
HIV care provider perceptions and approaches to managing unhealthy alcohol use in primary HIV care settings: a qualitative study https://www.ncbi.nlm.nih.gov/pubmed/31174601	Vanderbilt University Medical Center
Rural Adult Perspectives on Impact of Hearing Loss and Barriers to Care. https://www.ncbi.nlm.nih.gov/pubmed/30949965	University of Kentucky Physician-Mentored Student Research Fellowship
Effectiveness of Ambulatory Telemedicine Care in Older Adults: A Systematic Review https://www.ncbi.nlm.nih.gov/pubmed/31066916	Dartmouth Clinical and Translational Science Institute
Physician Trust and Home Remedy Use Among Low-Income Blacks and Whites with Hypertension: Findings from the TRUST Study. https://www.ncbi.nlm.nih.gov/pubmed/30915684	Penn State Clinical and Translational Science Institute
Rural-urban disparities in health care costs and health service utilization following pediatric mild traumatic brain injury https://www.ncbi.nlm.nih.gov/pubmed/30507042	National Center for Advancing Translational Sciences,
Prevalence of Sarcopenia Obesity in Patients Treated at a Rural, Multidisciplinary Weight and Wellness Center https://www.ncbi.nlm.nih.gov/pubmed/31384133	The Dartmouth Clinical and Translational Science Institute

Turning Science Into Health

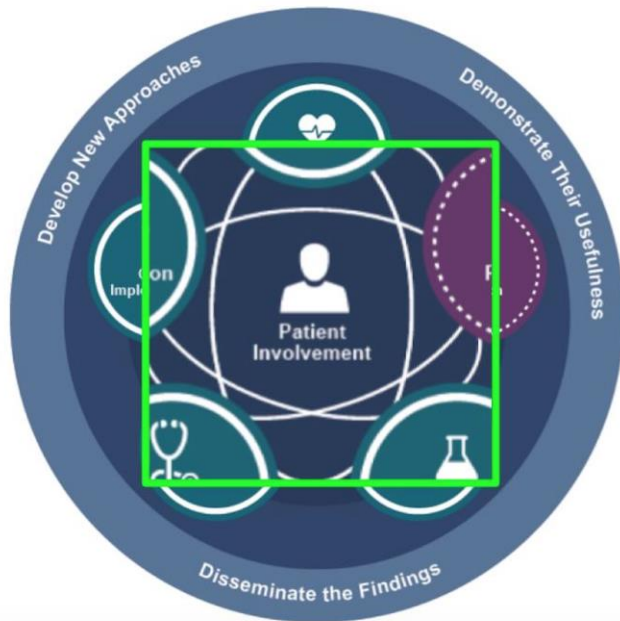


NCATS logo

NCAT mission

- **The 3 "Ds"**
 - *Develop science*
 - *Demonstrate science*
 - *Disseminate science*

Key Activity: *Patient Involvement*



U.S. Department of Health & Human Services | NIH | National Institutes of Health

NIH National Center for Advancing Translational Sciences

Search Term | Search | Site Map | Contact

Research | Funding & Notices | News & Media | About Translation | About NCATS

Home > Research > Clinical Innovation > Clinical and Translational Science Awards (CTSA) Program

Clinical and Translational Science Awards (CTSA) Program

The CTSA Program is designed to develop innovative solutions that will improve the efficiency, quality and impact of the process for turning observations in the laboratory, clinic and community into interventions that improve the health of individuals and the public. [Learn more.](#)

The Road to Improving Rural Health Outcomes

One out of every five Americans lives in a rural area, and many have difficulties accessing health care. To improve rural health outcomes, our CTSA Program is working to address health disparities unique to this region and promote health equity.

U.S. Department of Health & Human Services | NIH | National Institutes of Health

NIH | National Center for Advancing Translational Sciences

Search Term [] Search []
Site Map | Contact

Research Funding & Notices News & Media About Translation About NCATS

Home > Research > Clinical Innovation > Clinical and Translational Science Awards (CTSA) Program > About the CTSA Program > CTSA Program Hubs

CTSA Program Hubs

About the CTSA Program
[CTSA Program Hubs](#)
[Training & Career Development](#)

CTSA Program Projects & Initiatives
 CTSA Program in Action
 CTSA Program Funding Information

Currently, more than 50 medical research institutions across the nation receive Clinical and Translational Science Awards (CTSA) Program funding. These institutions work together to speed the translation of research discovery into improved patient care.

Download a table of [funded activities under the NCATS CTSA Program](#) (PDF - 139KB).


A CTSA Program hub is defined as a [UL1 award](#) with a linked [KL2 award](#) and an optional [TL1 award](#). In any particular fiscal year, if NCATS granted a no-cost extension (NCE) to an existing CTSA Program hub award, the Center would not count that NCE-status site as a funded hub during that fiscal year. Therefore, that NCE-status site would not be reflected in the table.

To view a list of CTSA Program awards, please click on underlined dollar amounts in the [table](#) (PDF - 139KB). For a list of CTSA Program hubs, select the underlined dollar amount in the row labeled "Hub Awards" (a UL1 award with a linked KL2 award and an optional TL1 award). This will [display a list of research results in NIH RePORT](#).

Books
 For NIH RePORT search results, select the "Books" header allows user to sort data columns. All data are also exportable to a spreadsheet.

Contact
[NCATS CTSA Program](#)

CTSA Program Supports Emerging Research on Health Effects of Plastics



Grantees: “CTSA hubs”

NCATS
Improving Health Through Smarter Science


Clinical and Translational Science Awards Program

NCATS' Clinical and Translational Science Awards (CTSA) Program provides critical resources and support needed to strengthen the entire spectrum of our nation's clinical and translational research enterprise. CTSA Program biomedical research institutions — called “hubs” — provide core resources, essential mentoring and training, and opportunities to develop innovative approaches and technologies designed to re-engineer existing capabilities. Program support and collaborative initiatives harmonize efforts, foster collaboration and strengthen this network to improve the quality, safety, efficiency and speed of clinical and translational research nationally.

CTSA Program Goals

- Train and cultivate the translational science workforce;
- Engage patients and communities in every phase of the translational process;
- Promote the integration of special and underserved populations in translational research across the human lifespan;
- Innovate processes to increase the quality and efficiency of translational research, particularly of multisite trials; and
- Advance the use of cutting-edge informatics.

ncats.nih.gov/ctsa



“Engage patients and communities in every phase of the translational process.”

CTSA Program Hubs Collaborate to Assess Community Engagement

Community engagement is a crucial feature of successful translational research. Community members are the ultimate beneficiaries of research results, and when they have a voice in the research process, outcomes are more relevant to their needs and more readily adopted. However, the effectiveness of community engagement efforts can be difficult to measure, and better evaluation methods and tools are needed.

Recognizing these challenges, investigators at the University of Rochester, an NCATS [Clinical and Translational Science Awards \(CTSA\) Program](#) hub, launched a pilot study to develop and test a community engagement assessment process. The goal is to help academic health centers evaluate and enhance their engagement activities, which in turn will improve the translation of research results into real-world practice.

Seven other CTSA Program hubs participated in the pilot study, and all eight institutions are using the results to improve their engagement efforts. [Learn more about the assessment tool](#).

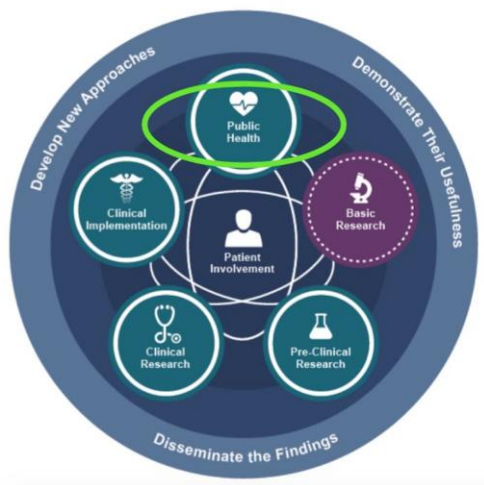
Posted May 2018



Community members are the ultimate beneficiaries of research. (Daniel Soñé Photography, LLC)

Community Engagement Programs

Language Differences



NCATS Activities

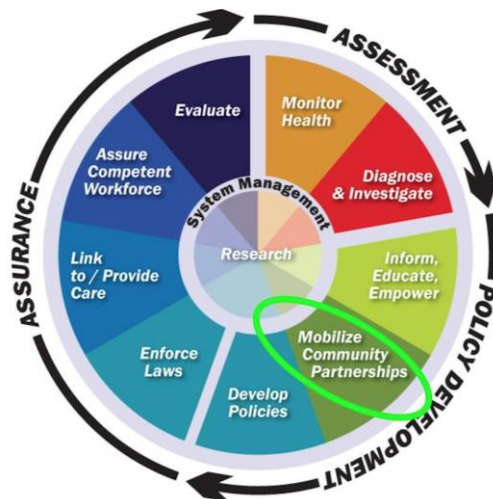
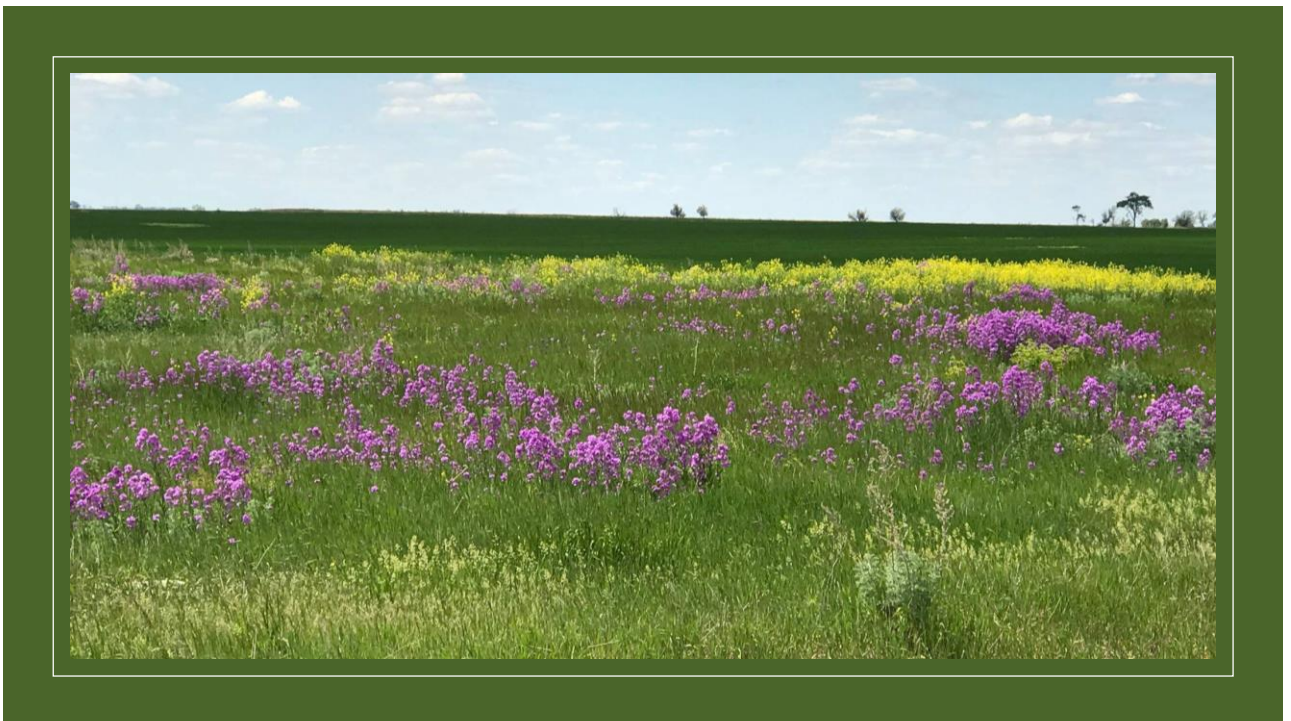
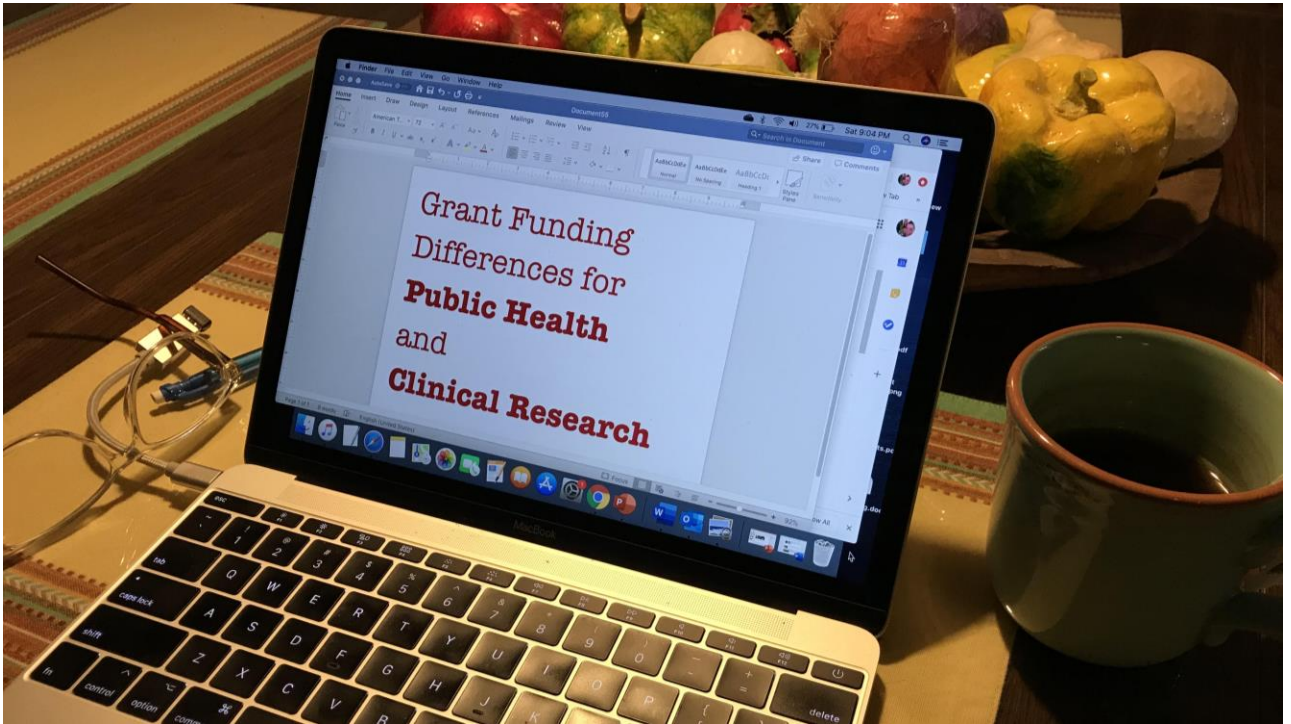


Image Source: CDC

Public Health Core Activities



NCATS

COLLABORATE. INNOVATE. ACCELERATE.

Rural Health Focus of CTSA Program

Michael G Kurilla, MD, PhD

Director, Division of Clinical Innovation, NCATS

March 2020

**NIH**

National Center
for Advancing
Translational Sciences

NCATS Mission



To catalyze the generation of **innovative methods and technologies** that will enhance the development, testing and implementation of diagnostics and therapeutics across a wide range of human diseases and conditions.

Division of Clinical Innovation

Clinical and Translational Science Awards (CTSA) Program



Mike Kurilla, M.D., Ph.D.
Director
michael.kurilla@nih.gov

- Collaboratively facilitates and accelerates translational projects locally/regionally/nationally
- Scientific and operational innovation to improve the efficiency and effectiveness of clinical translational research
- Creates, provides, and disseminates domain-specific translational science training
- Fosters creation of an academic discipline of translational science



CTSA Program Goal - Promote the integration of special and underserved populations in translational research across the human lifespan

Community Engagement Core



Community Health Coalition Development Program



Community Scientist Academy



WWAMI Network



Project ECHO



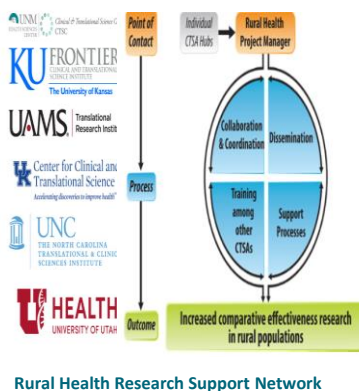
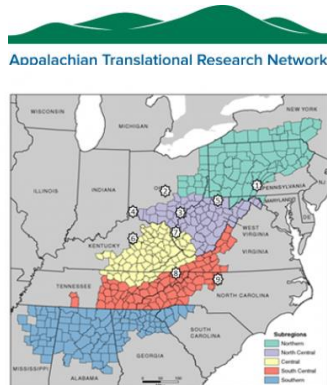
CTSA Program – Special Focus

Notice of Information: NCATS Clinical and Translational Science Awards (CTSA) Program's Interest in Improving Rural Health Outcomes and Eliminating Health Disparities

Notice Number: NOT-TR-19-015

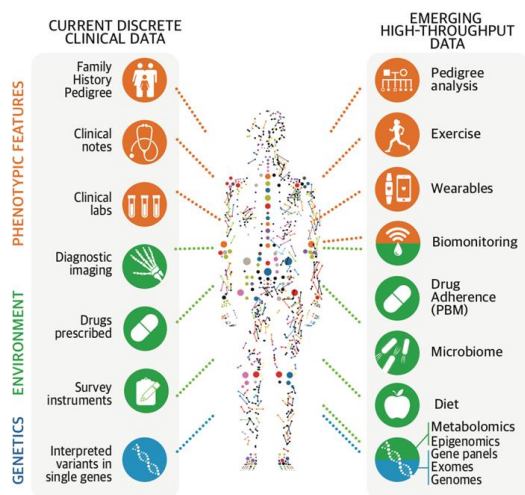
Key Dates

Release Date: January 28, 2019



Peer-based Retention of people who Use Drugs in Rural Research (PROUDR2)

Informatics: Clinical Data to Health (CD2H) *Accelerating innovation in informatics to improve clinical care*



- **Clinical informatics**
 - Developing EHR systems, clinical standard terminologies, clinical data warehouses and common data models
- **Bioinformatics**
 - Translating genomic, proteomic and other -omic data
- **Research Information Technology**
 - Developing enterprise platforms for electronic data capture, cohort discovery, clinical trials management and secure computing environments



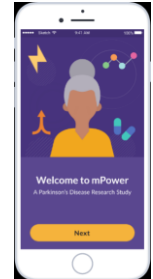
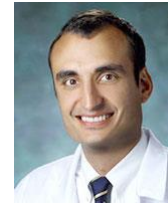
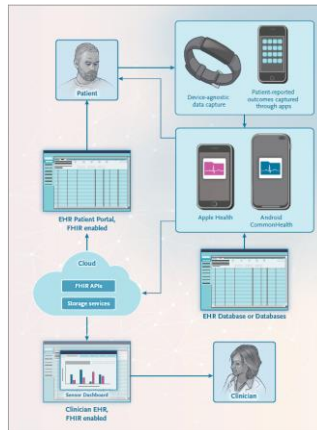


ARTICLE

DOI: 10.1038/s41467-018-07262-2 OPEN

Smartphone app for non-invasive detection of anemia using only patient-sourced photos

Robert G. Mannino^{1,2,3}, David R. Myers^{1,2,3}, Erika A. Tyburski^{1,2,3}, Christina Caruso², Jeanne Boudreaux², Traci Leong⁴, G. D. Clifford^{1,5} & Wilbur A. Lam^{1,2,3}



"At its peak, over 15,000 people (Parkinson Disease) from all 50 states signed up to engage in our research," "And they did it on their own terms using their own devices." -Dr. Ray Dorsey from University of Rochester Medical Center CTSA.

Mobile Devices and Health

Ida Sim, M.D., Ph.D. N ENGL J MED 381;10 NEJM.org September 5, 2019

An Un-Meeting on Rural Health and Health Equity

April 8, 2019 | Gainesville, FL



Hosted and Supported by:



Supported by CLIC (NCATS U24TR002260), the UF CTSI (supported in part by NCATS CTSA UL1TR001427), and UF/IFAS. Complimentary admission to Sweat Solution exhibit provided by the Cade Museum. Content of event materials is solely the responsibility of the organizers and does not necessarily represent the official views of event sponsors.



Inaugural NIH Rural Health Seminar

November 18, 2019

9:30 a.m. - Noon ET

NIH Main Campus

Natcher (Building 45) Balcony A/B

For more information visit: <https://ncats.nih.gov/events>

NIH VideoCast: <https://videocast.nih.gov>

- **3** Sponsoring ICs
- **10** Supporting ICs
- **5** NIH IC Directors/**2** Deputy Directors
- **178** in-person registrations/**557** online registrations from 50 states

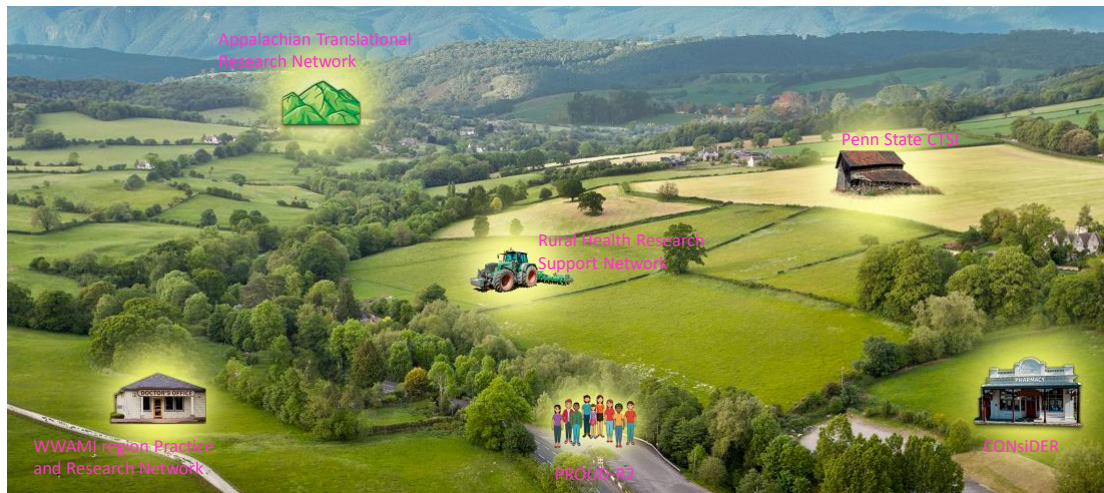


Supporting a Diverse Workforce Focused on Rural Health Disparities

- University of Alabama at Birmingham (UAB) CTSA Program hub partners with the Department of Community and Rural Medicine and the Institute for Rural Health Research at the College of Community Health Sciences, University of Alabama:
 - Serves as a resource for researchers, individuals and organizations working to improve the health of rural communities
 - Dr. Mercedes Morales-Alemán, PhD, Assistant Professor, supported through a **diversity supplement** from the CTSA Program through UAB, conducts research on better understanding the multi-level factors that underlie health disparities in adolescent Latinas in the United States South through a community-based participatory approach.



The Road to Improving Rural Health Outcomes



New!

[Rural Health Website](#)

Leveraging a CTSA to Address Health Challenges in Rural Populations

March 31, 2020

Laura James, MD

Associate Vice Chancellor for Clinical and Translational Research, UAMS

PI, Clinical and Translational Research Award (CTSA)*

Director, Translational Research Institute, UAMS

**supported by UL1 TR003107 from the National Center for Advancing Translational Sciences*

UAMS Translational Research Institute

Background



42% of Arkansans live in rural areas compared to 15% of the US population.

University of Arkansas Division of Agriculture. *Rural Profile of Arkansas*. 2017

Unique Health Characteristics of Rural Populations

- Higher rates of hypertension and obesity
- Higher rates of smoking
- Lower rates of physical activity
- Reduced access to primary care and specialty physicians
- Lower rates of insurance
- Greater distrust of physicians
- Higher rates of poverty
- Greater numbers of motor vehicle crashes
- Higher rates of opioid overdoses

UAMS Translational Research Institute

Our Mission

To develop new knowledge and novel approaches that will measurably address the complex health challenges of rural and under-represented populations.

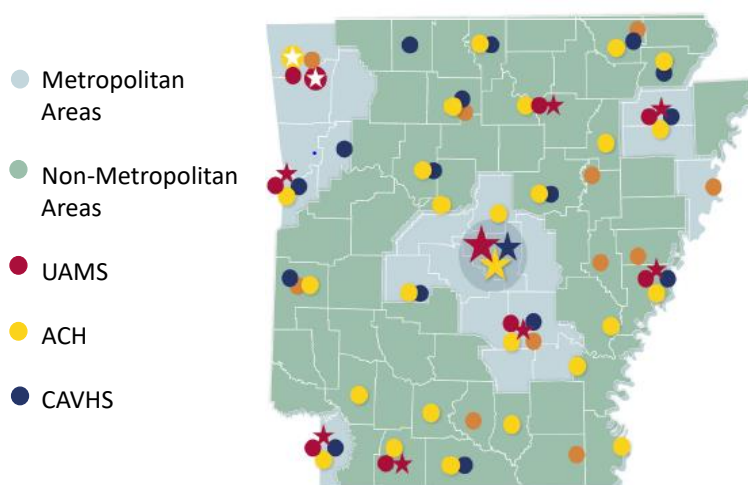
UAMS Translational Research Institute

Existing Strengths

- Strong community engagement core (COPH)
- National reputation in Implementation Science
- Strong background in special populations research (COPH, Pediatrics, UAMS-NW)
- Department of Biomedical Informatics (Prior, 2016)
- Department of Statistics
- Strong cross-college interactions

UAMS Translational Research Institute

Leveraging our Strengths in a state of 3 Million



UAMS Translational Research Institute

Leveraging Institutional Strengths & CTSA Tools

.....to support our hub partners and other NIH programs

- UAMS Biomedical Informatics and Biostatistics
- Arkansas Research Central Data Repository – AR-CDR
- ACH – Epic launch November 2017
 - TRI (CTSA) leading ACH I2B2 implementation
- Adoption of smart IRB by Idea States Pediatric Clinical Trials Network (ISPCTN); 17-site pediatric network, a component of the ECHO program

UAMS Translational Research Institute

Community Engagement (CE) Team



Kate Stewart, MD, MPH
Director



Tiffany Haynes, PhD
Associate Director



Keneshia Bryant-Moore, RN, PhD
Associate Director



Nicki Spencer, MHA
Program Manager



Rachel Hale, MA
Program Manager



Jinger Morgan
Program Coordinator



Anna Huff Davis
Community Liaison

UAMS Translational Research Institute

CE Services and Programs

- Staff the TRI Community Advisory Board (CAB)
- CE consultations
- Do's and Don'ts of Community Engagement Workshop
- Liaison with existing community partners
- Help with starting Community Advisory Boards (CABs)
- Community Review Boards (CRBs)
- Equipment Library
- **Community Scientist Academy (CSA)**
- Community grant reviewers
- Community Partner Celebration



UAMS Translational Research Institute

Expansion of Community Scientist Academy

- Launch in 2016
- Expansion to Veterans and High School Students (Photo Voice project)



STUDENT RESEARCH ENGAGEMENT:

- Doctoral study on teen pregnancy
- Community review board for IDeA States Pediatric Clinical Trials Network study

- One-day CSA for community organizations **CPEARL Participants**
- Successfully disseminated to Ohio State University CTSA



UAMS Translational Research Institute

CPEARL



Improving health literacy
among monolingual
Spanish patients



Conscious discipline
intervention for families
with high ACES scores



Peer advocates for criminal
justice system navigation



Assessing and addressing
priority health concerns



Educational outreach to
rural African American men



Physical fitness for
young adults with
developmental disabilities

UAMS Translational Research Institute

Integrating Special Populations: Engaging Rural and Minority Participants in Translational Research

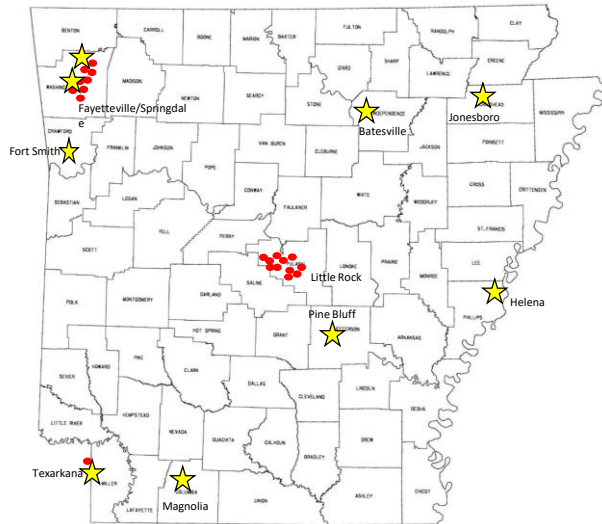
Pearl A. McElfish, PhD

**Integrating Special Populations Director, TRI
Vice Chancellor for Northwest Arkansas Region**



UAMS Translational Research Institute

Expansion of Research Throughout Arkansas



Current Foundation

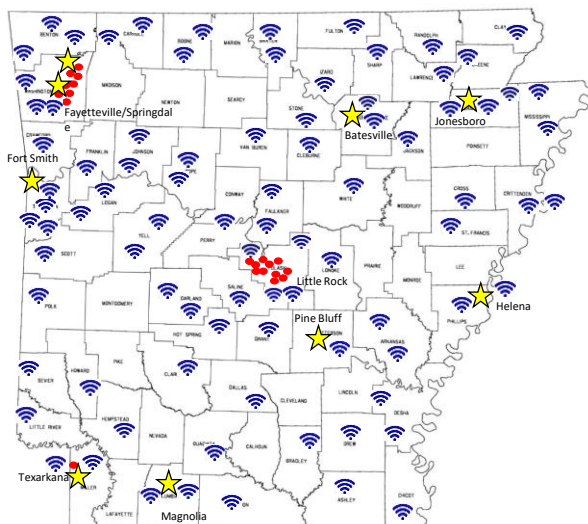
- UAMS clinics and clinical affiliates
- ★ affiliates

Regional Campuses -
UAMSHHealth Batesville,
Fayetteville/Springdale,
Fort Smith, Helena,
Jonesboro, Magnolia,
Texarkana, and Pine Bluff

Family Practice
Residency Programs

UAMS Translational Research Institute

Potential to Reach All of Rural Arkansas



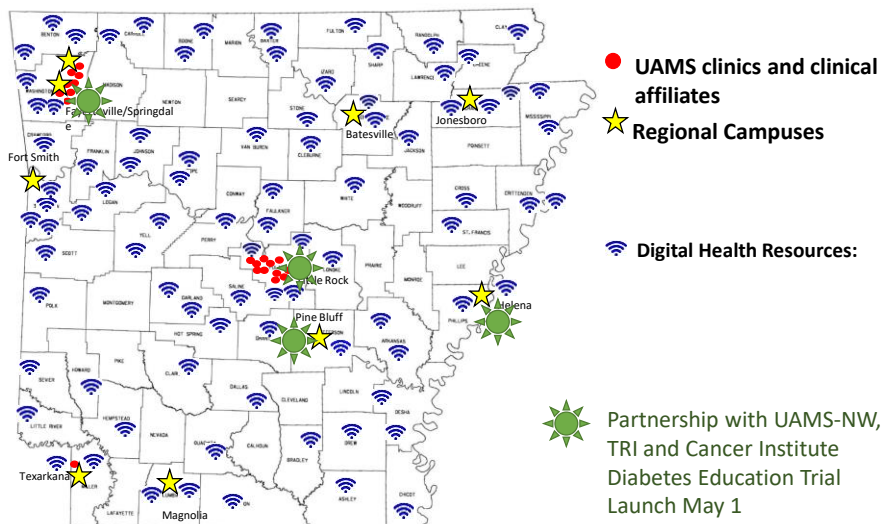
- UAMS clinics and clinical affiliates
- ★ affiliates

Regional Campuses – Family
Medical Centers: Batesville,
Fayetteville/Springdale, Fort
Smith, Helena, Jonesboro,
Magnolia and Pine Bluff

- Digital Health Resources:
 - High-risk pregnancy partners
 - Stroke Program participating hospitals
 - Trauma telemedicine (Image Repository, Hand, Burn)

UAMS Translational Research Institute

Launch of Rural Research Network



UAMS Translational Research Institute

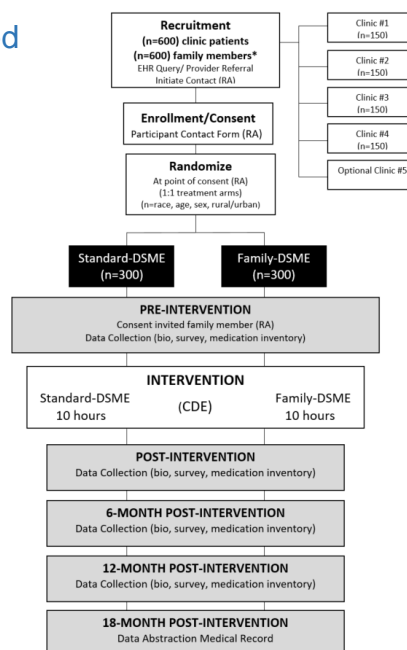
In the past seven years, diabetes increased 24% from 11.2% to 13.9% of adults in Arkansas

“Comparative Effectiveness of Family DSMEs and Standard DSMEs among Diverse Populations”*

Participating Clinical Sites

1. UAMS South Central, Pine Bluff
2. UAMS East, Helena
3. UAMS Northwest, Fayetteville
4. UAMS Little Rock

*PCORI Contract; 1/1/2020 – 2/1/2024



UAMS Translational Research Institute

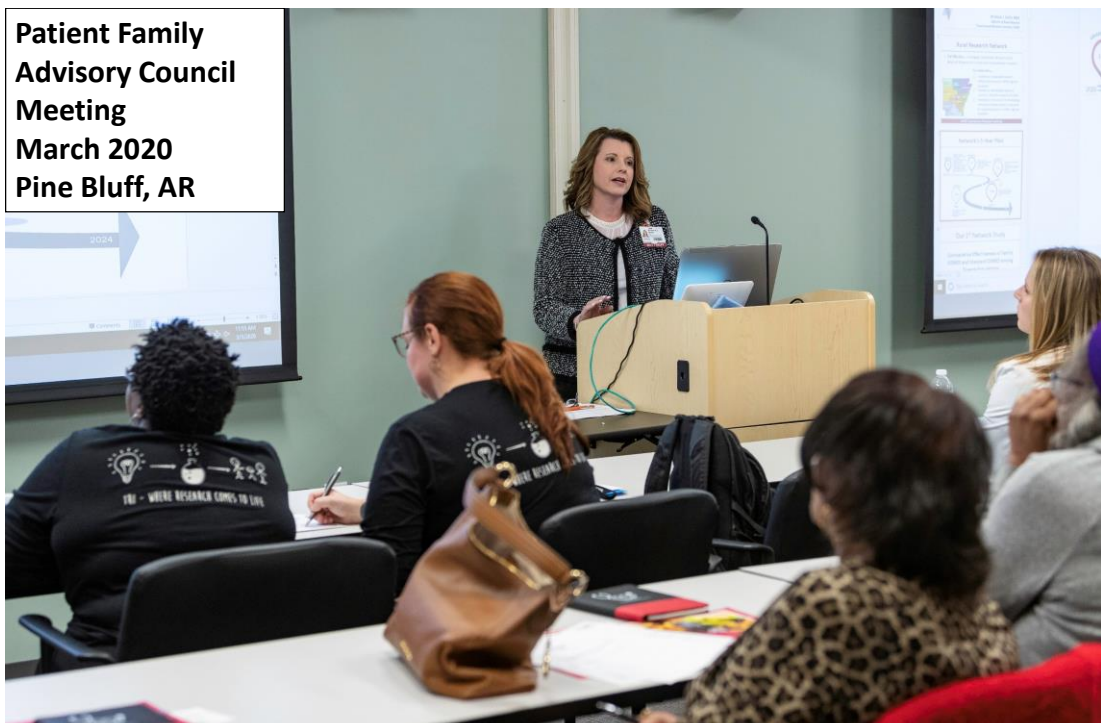
Goals of Rural Research Network

- Leverage our state-wide clinical and telemedicine platform to engage special populations (Rural, Minority, Older Adults, Children)
- Create a Sustainable infrastructure with UAMS partners

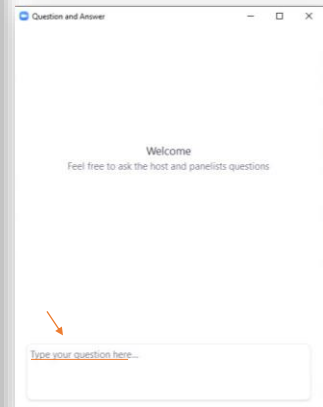
Progress

- 1) Hired Director of Rural Research Network in December
- 2) PCORI – McElfish launch May 1 – 4 sites
- 3) PCORI – McElfish launch – 2 sites – Marshallese
- 4) Continue to layer research support throughout regional sites via federal funds

UAMS Translational Research Institute



Questions?



Thank you!

- Contact us at ruralhealthinfo.org with any questions
- Please complete webinar survey
- Recording and transcript will be available on RHIhub website